



Project : **Gala Eternia**

Builder : **Gala Infrastructure Builders**

Location : **Thaltej, SG Highway & Surroundings**

**99acres.com**  
India's No. 1 Property Portal

## Overview



### **Gala Eternia - Highlights:**

Gala Eternia of Gala Group, a luxurious and prestigious residential development having 3BHK apartments will be coming up in the rapidly expanding residential vicinity of Ahmedabad. Its proximity to hospitals, government schools and other reputed schools, colleges, banks, supermarkets and specialty restaurants will make it a dream destination. APPROVALS AUDA (Ahmedabad Urban Development Authority) Environment Clearance from GPCB Fire NOC from AMC Fire Department Airport NOC FEATURES RCC/paved internal roads

**Possession: Ready to move**

**Floor Plan**



**3BHK+3T(1) Super Area: 1385 sq ft, Apartment**

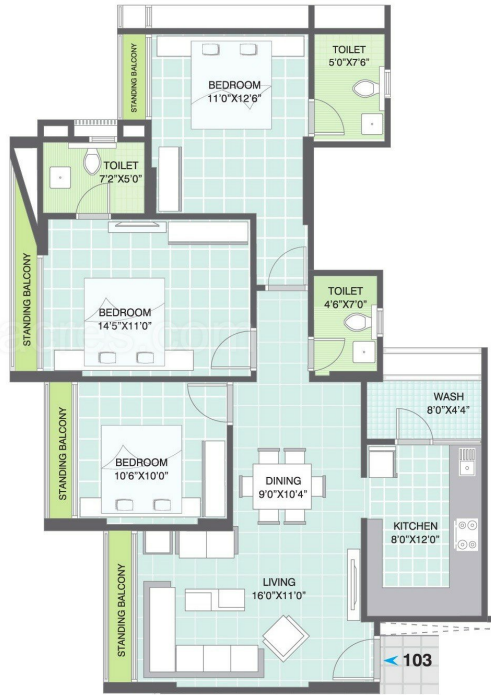


**3BHK+3T(2) Super Area: 1655 sq ft, Apartment**



**BLOCK - D** (3 BHK-STD)  
 UNIT 101 & 102 - 1655 SQ.FT.  
 UNIT 103 & 104 - 1700 SQ.FT.  
 (1<sup>ST</sup> TO 13<sup>TH</sup> FLOOR)

**REFUGE AREA** - 4<sup>TH</sup>, 7<sup>TH</sup> & 11<sup>TH</sup> FLOOR  
 (UNIT 102 & 103)



**3BHK+3T(3) Super Area: 1700 sq ft, Apartment**



**BLOCK - A** (3 BHK-DLX) - 1745 SQ.FT.  
 (1<sup>ST</sup> TO 13<sup>TH</sup> FLOOR)



**3BHK+3T(4) Super Area: 1745 sq ft, Apartment**



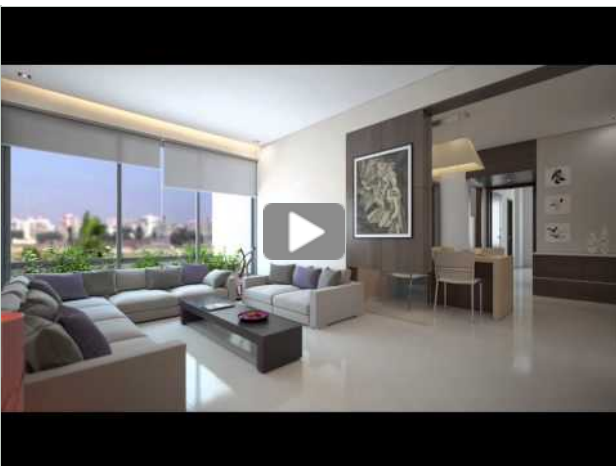
Project : Gala Eternia

Builder : Gala Infrastructure Builders

Location : Thaltej, SG Highway & Surroundings

99acres.com  
India's No. 1 Property Portal

### Photos & Videos



[View Project video](#) YouTube



Project : Gala Eterna

Builder : Gala Infrastructure Builders

Location : Thaltej, SG Highway & Surroundings

**Directions**

Location Map



**Amenities**

CCTV Camera  
Security  
Community Hall  
DTH Television  
Entrance Lobby

**Common Buildings**  
Club House  
Multipurpose Hall

**Sports**  
Children's Play Area  
Gymnasium

**Landscape**  
Landscape Garden

**Others**  
Lift(s)  
Car Parking

**Security**  
InterCom  
Fire Fighting  
Systems

0  
Indoor Games