

OEUVRE  
अवर



5 B H K

---

*the*  
crafted  
canvas

A photograph of a modern, multi-story apartment building at dusk. The building features a dark facade with large windows and balconies. The balconies are illuminated from within, creating a warm glow. The sky is a deep blue with some light clouds. The text 'the canvas of life' is overlaid on the right side of the image, with 'the' in a simple sans-serif font and 'canvas of life' in a white script font. Below 'the' is a horizontal line. At the bottom right, the text '13 stories / 24 units' is displayed in a simple sans-serif font.

the

*canvas of life*

13 stories / 24 units







epitome of  
*brilliant design & architecture*



DE UVRE























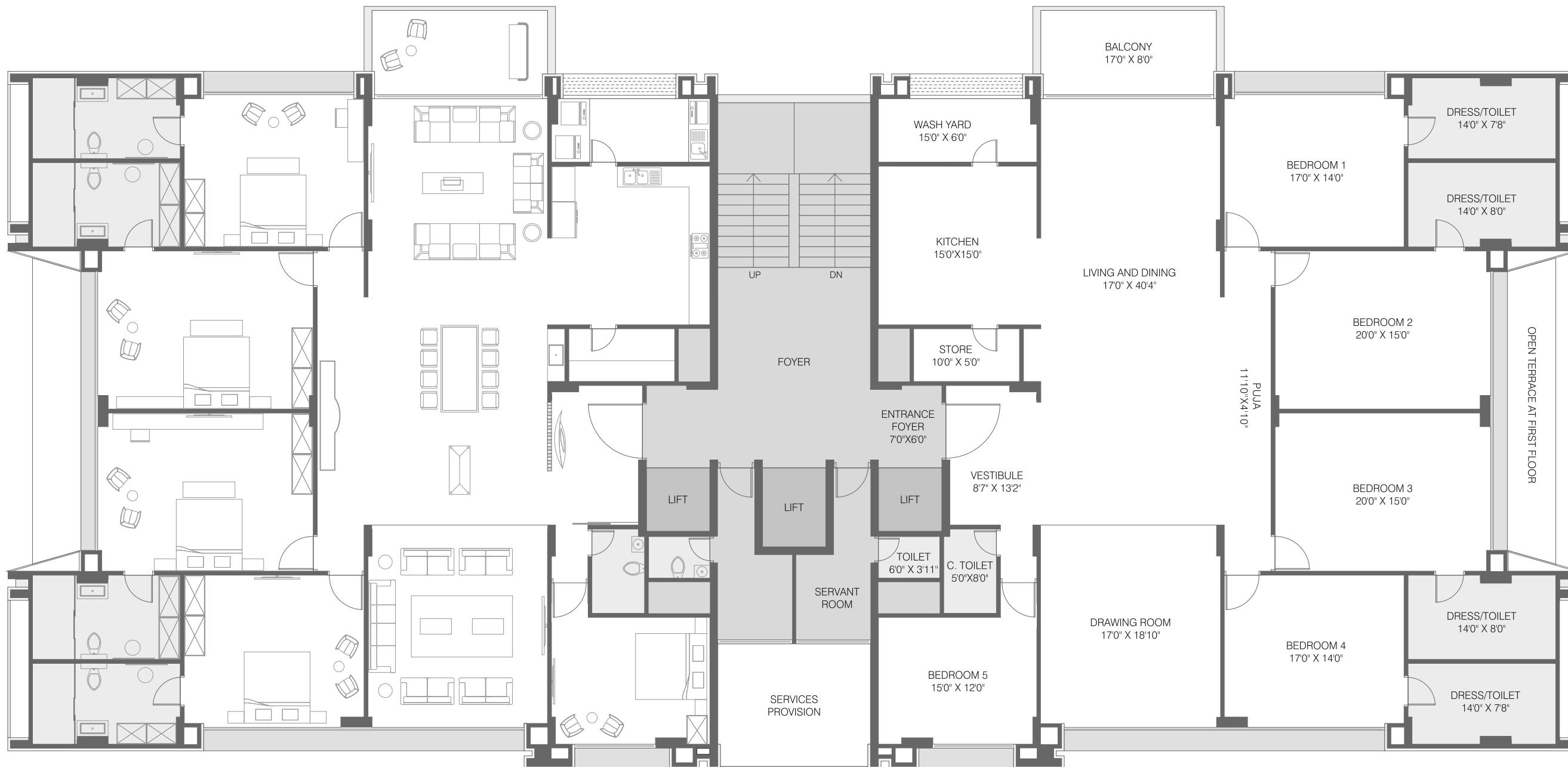












TYPICAL FLOOR









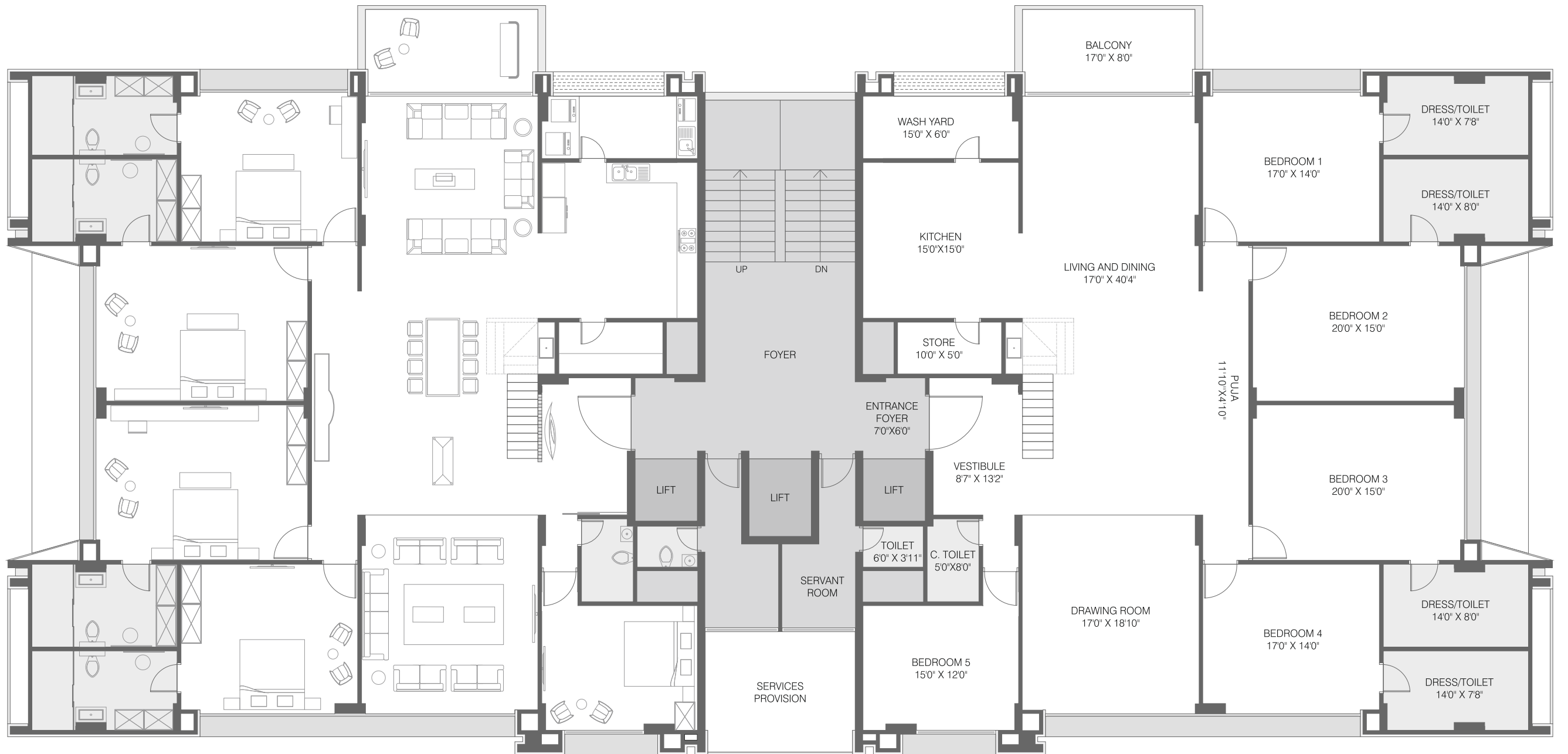












PENTHOUSE LEVEL-1







PENTHOUSE LEVEL-2





A modern rooftop pool at dusk. The pool is in the foreground, reflecting the sky and the surrounding architecture. To the left, there is a lounge area with a hanging chair, a sofa, and a coffee table. A large tree stands in the center of the pool area. The background features a wooden fence and a cloudy sky. The overall atmosphere is serene and sophisticated.

an artistic  
*masterstroke*









OEUVRE  
अव्वर



## — F E A T U R E S —

- Well-furnished and equipped club house for a resort style living.
- Exquisite indoor gaming zone
- State of the art Gymnasium for your fitness and health
- Swank Home theater : Where you can cherish the best of life with your family and friends
- Children playing area
- Exclusive seating area for privileged citizens
- Grand edifice on your arrival
- Sports area: To foster your inner athlete we have amazing sports field
- Non-intrusive swimming area with amenities
- Drop off zone
- Spacious lobby lounge with gorgeous waiting area
- Purposive and glorious event plaza for your own slice of luxury
- 3 tier surveillance: (CCTV, manned personnel, video door phone)
- Private 4 car parking for each apartment
- Segregated servant quarters for your helping aides.
- Specially designed façade to shield against harsh climatic changes



S P E C I F I C A T I O N S

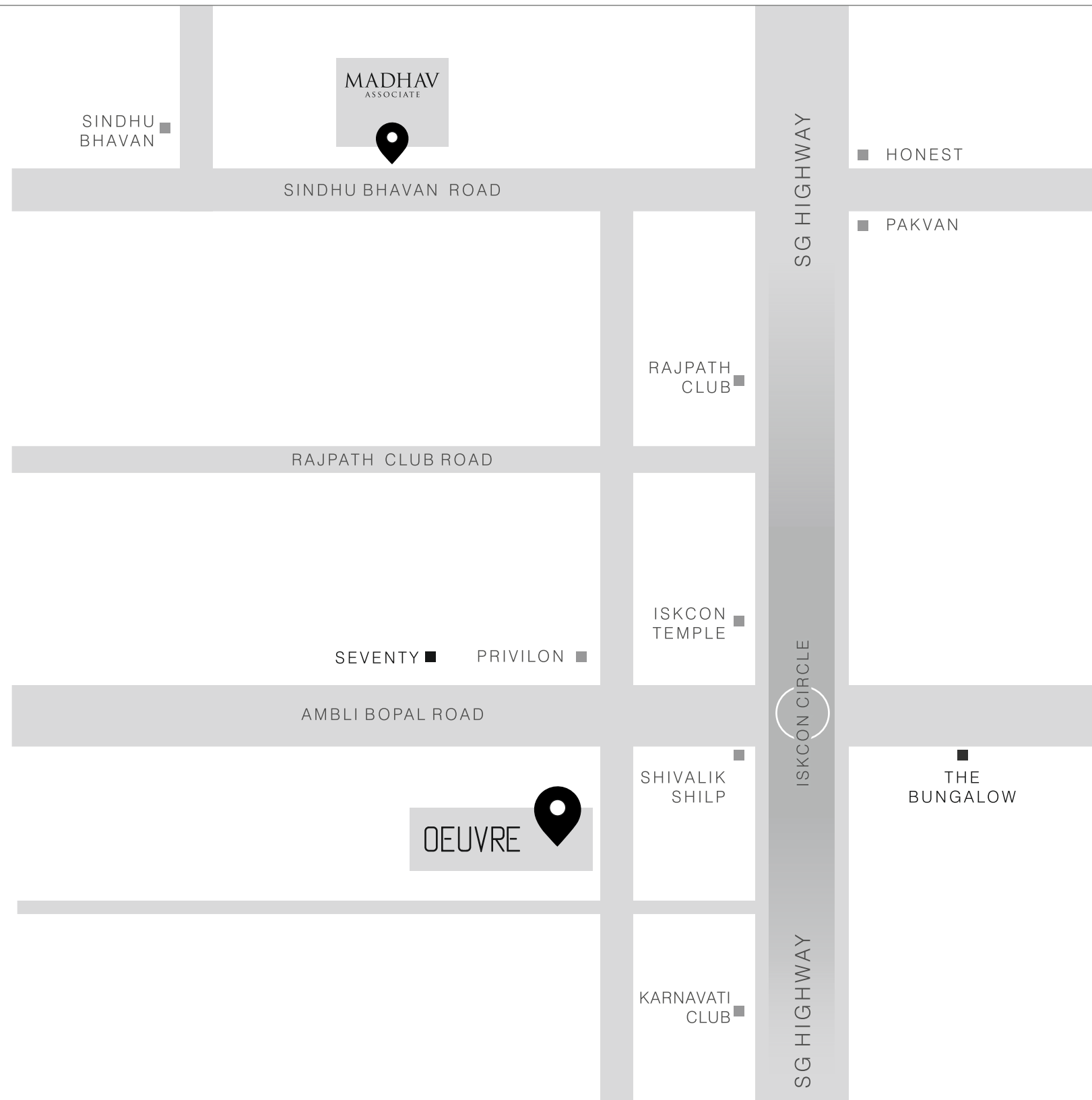
FLOORING	<ul style="list-style-type: none"><li>- entire apartment have italian marble or wooden flooring</li><li>- balconies &amp; utility areas paved with anti skid floor</li></ul>
WALL FINISH	<ul style="list-style-type: none"><li>- pop punning with primer coat</li></ul>
WINDOW	<ul style="list-style-type: none"><li>- specially designed aluminum / UPVC sliding windows with DGU glass</li></ul>
ELEVATORS	<ul style="list-style-type: none"><li>- centrally air conditioned elevators from mitsubishi, schindler or kone</li></ul>
TOILET	<ul style="list-style-type: none"><li>- ultra contemporary italian type dedo</li><li>- modular glass cubical for shower area</li><li>- top-of-the-line CP fittings and sanitary ware</li></ul>
PLUMBING WORK	<ul style="list-style-type: none"><li>- CPVC pipes   UPVC pipes for soil</li></ul>
ELECTRICAL WORK	<ul style="list-style-type: none"><li>- branded &amp; contemporary designed modular switches</li></ul>
HVAC	<ul style="list-style-type: none"><li>- leading edge VRV systems of mitsubishi or homogeneous brands</li></ul>
hot water supply	<ul style="list-style-type: none"><li>- ultramodern individual heat pumps for each unit</li></ul>





## LOCATION

**"OEUVRE"**  
near shivalik shilp,  
iskon circle,  
s.g. highway,  
ahmedabad - 380015







MADHAV  
ASSOCIATE

MADHAVGROUPINDIA.COM