

F O R T H E P E O P L E

W H O K N O W T H A T

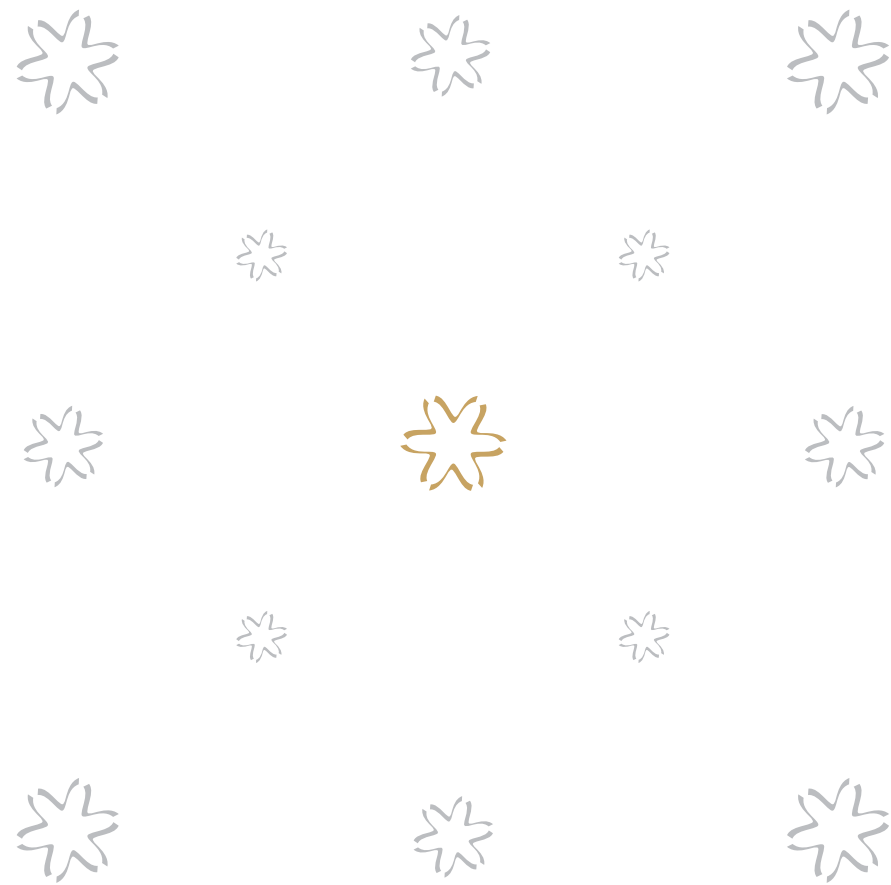
T H E Y D E S E R V E

T H E V E R Y B E S T





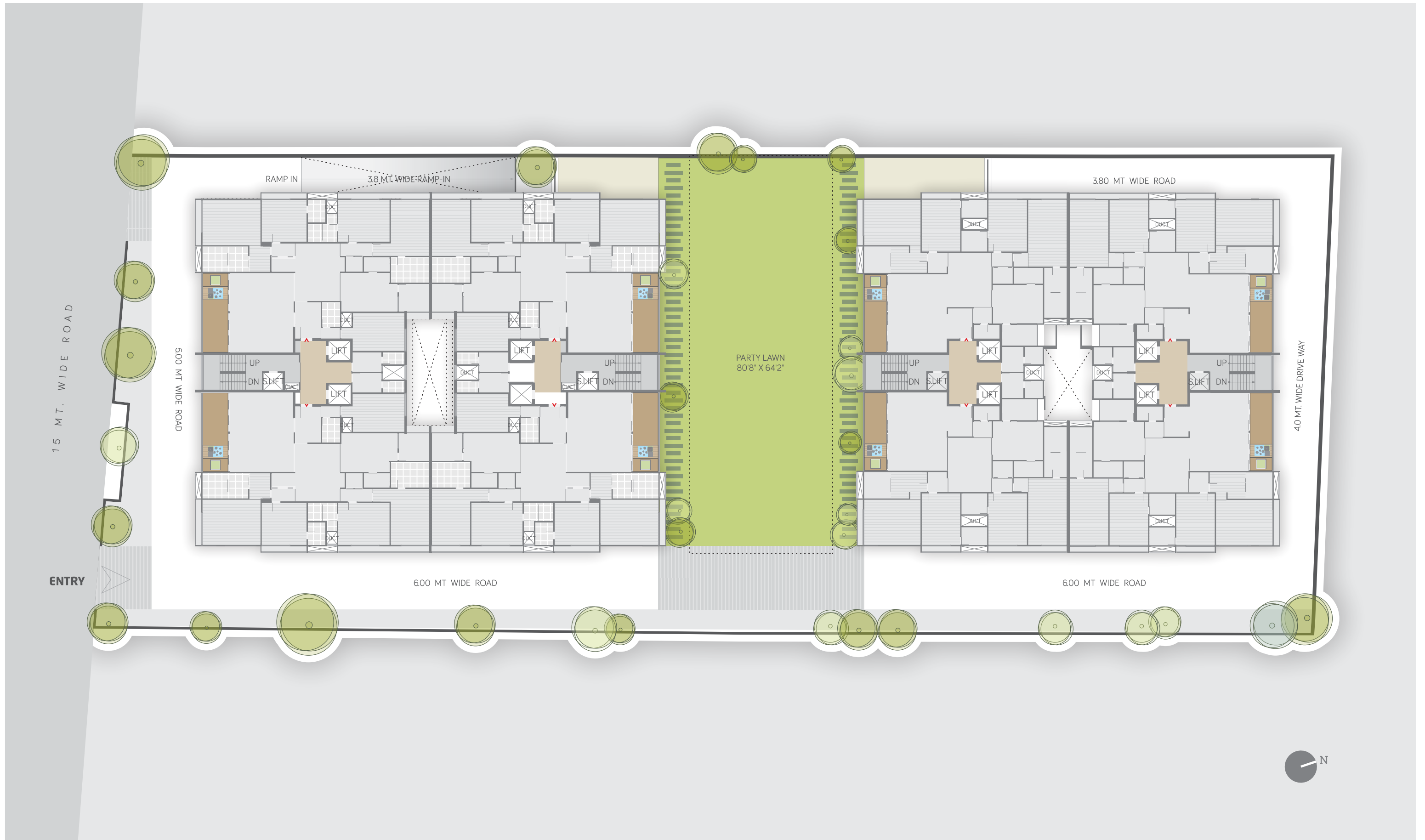




THE LUXURY  
OF SPACE &  
PLANNING

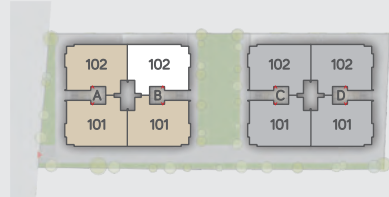
Small is good... but when it comes to spaces  
large is better! We at AMARA have designed  
our homes with the best architects of town and  
planned it to suit and enhance  
your life and lifestyle!



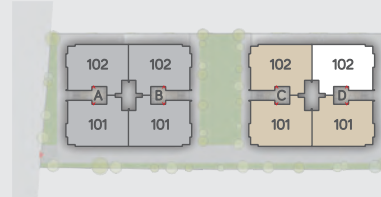


SITE PLAN

# 5 BHK



# 4 BHK



TYPICAL UNIT



# SPECIFICATIONS

## DRAWING/LIVING/DINING ROOM

- Italian flooring
- Walls Mala plaster with wall putty.
- Main entrance door - 35mm thick flush door.

## MASTER BEDROOM

- 1st Master bedroom with Italian flooring.
- 2nd Master bedroom with Laminated wooden flooring.
- Walls mala plaster with wall putty.
- 32 mm thick flush doors.

## BEDROOM

- 800 x 800 mm Vitrified Tiles.
- Walls Mala plaster with wall putty.
- 32 mm thick flush doors.

## KITCHEN

- Vitrified flooring
- Modular kitchen with granite working top.
- Vitrified tiles dado on kitchen counter up to 7ft ht with stainless steel sink.
- Kota in wash yard with vitrified tiles dado up to sill level

## COURTYARD / VERANDAH

- Granite flooring
- Glass railing

## AIR CONDITIONING

- Individual VRV on terrace

## TOILET

- Vitrified tiles on floor and walls (Up to lintel level).
- Platform will be of granite / marble stone.
- Jaguar or equivalent bathroom fittings.

## WINDOWS

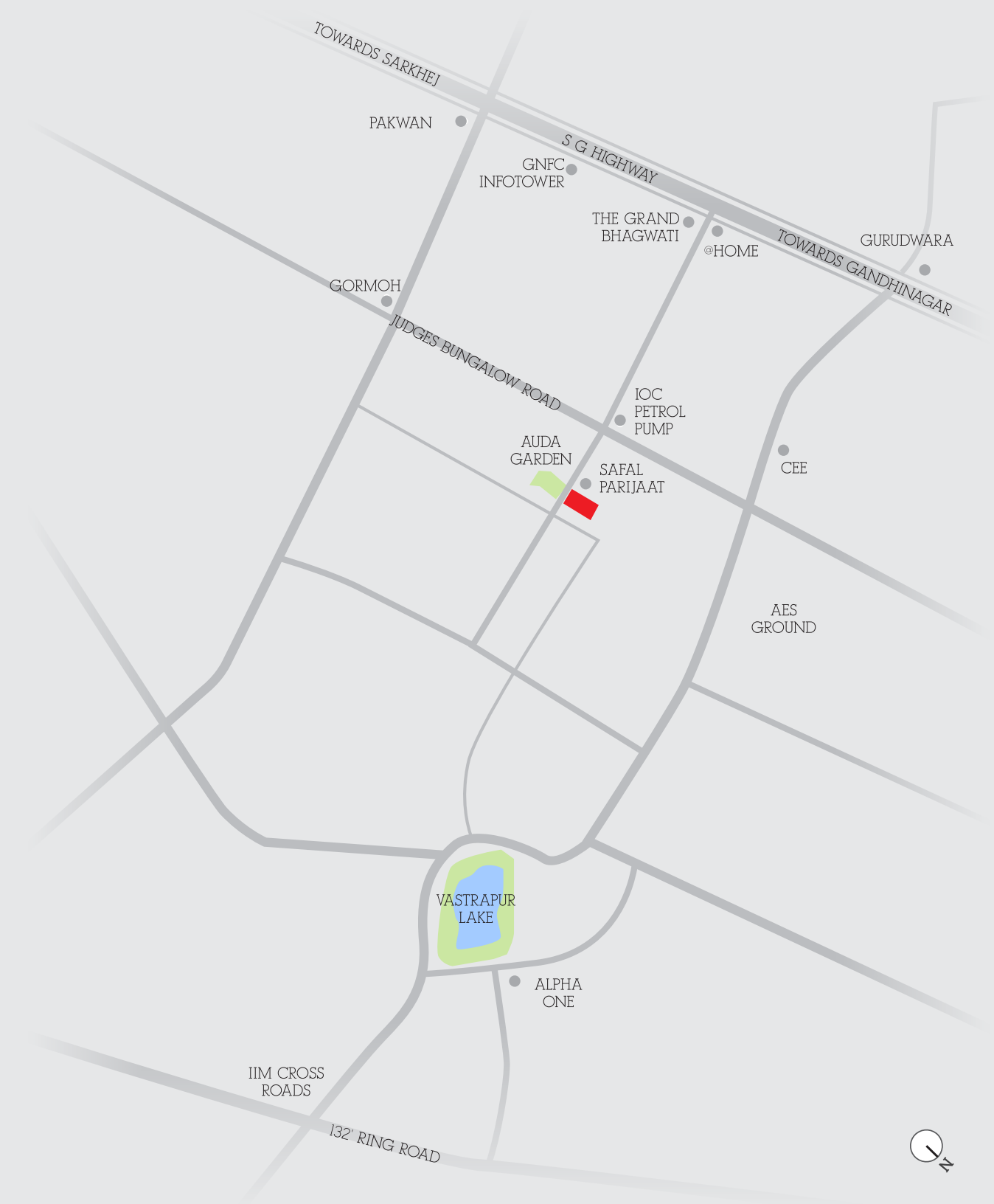
- Anodized aluminum sliding windows with stone jamb.

## PLUMBING WORK

- U.P.V.C. water supply pipes.
- Central water softening plant.
- Percolation wells as per the norms.

## ELECTRICAL WORK

- Branded modular switches.
- Protective ELCB for each apartment.
- 3-phase concealed copper wiring with adequate number of points in all rooms.





***Parker***

+91 98795 77220  
info@zaverirealty.com  
www.zaverirealty.com