



A Premium Living in the Finest Neighbourhood of Ahmedabad,
Sindhu Bhavan Road



The urban population of India is 32 percent of the total population. Majority of this populace choose to live in apartments. For such a large demographic the product and choices available are very limited and unimaginative.

The residential development proposes to set a benchmark, a precedent for eco-sensitive, Humane development. The premise is to develop a product which uses common sense in an uncommon way



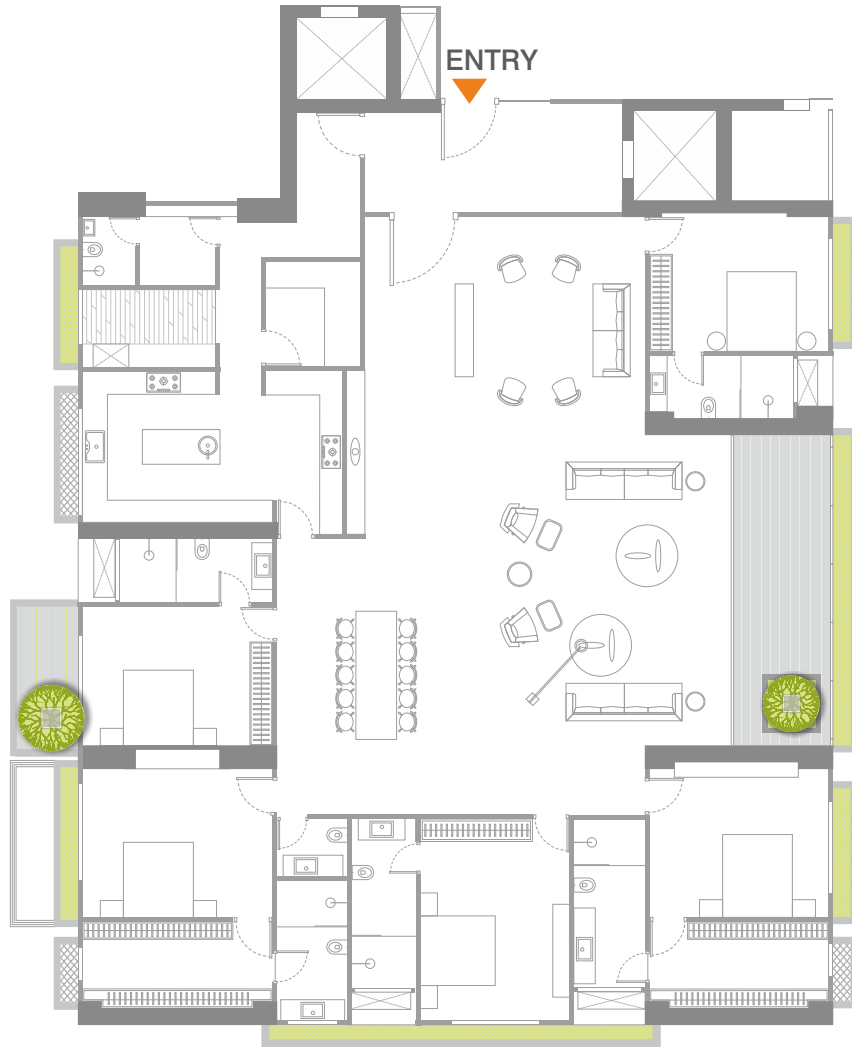


Proposed Building Elevation

Typical Floor Plan - 3rd to 17th Floor



Design 1



Design 2.1





Green Terrace