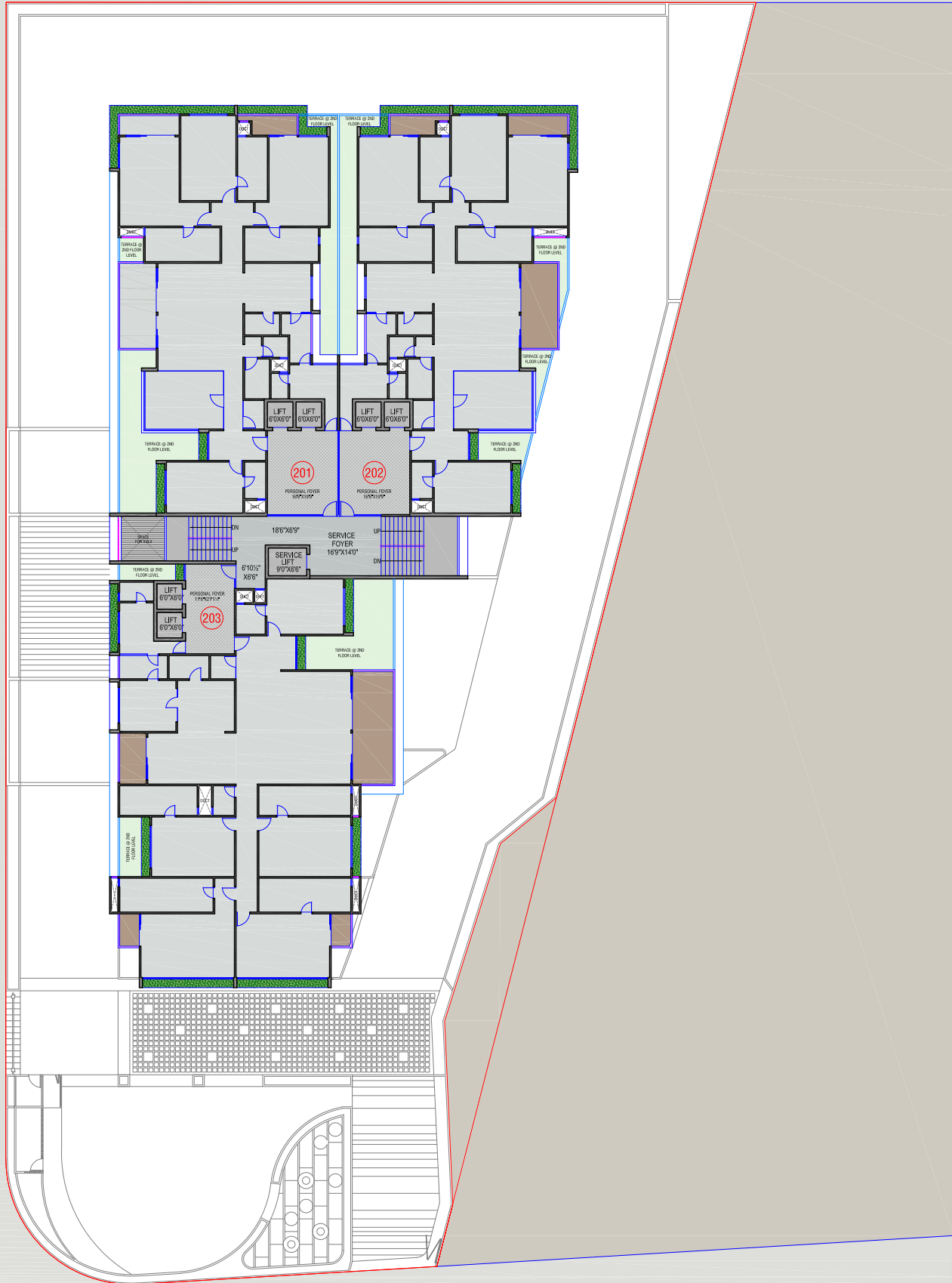
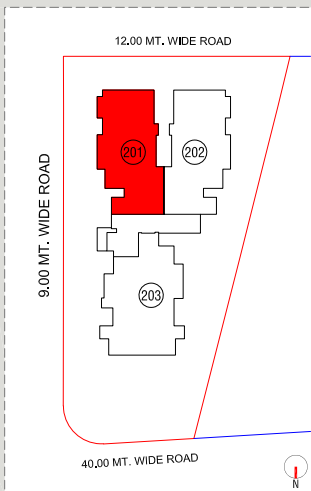


**PROPOSED RESIDENTIAL PROJECT
AT AMBLI ROAD, AHMEDABAD**

9.00 MT. WIDE ROAD



40.00 MT. WIDE ROAD

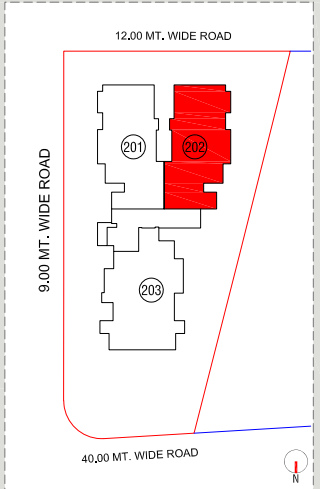
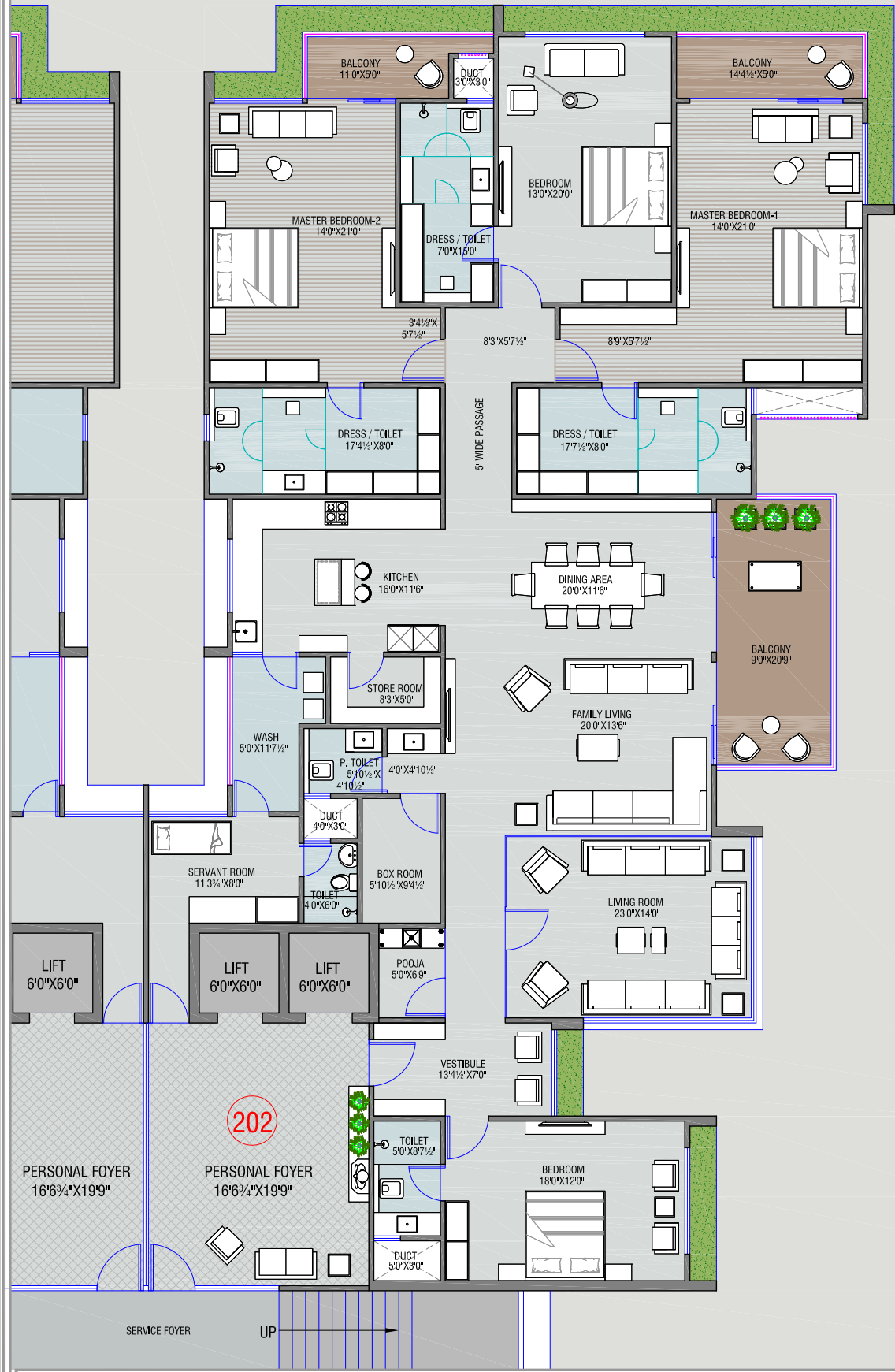


PROPOSED RESIDENTIAL PROJECT
AT AMBLI ROAD, AHMEDABAD

4BHK UNIT PLAN-201
(2ND TO 19TH FLOOR)

CONCEPTUAL PLANNING FOR STUDY ONLY.
NOT FOR CIRCULATION.



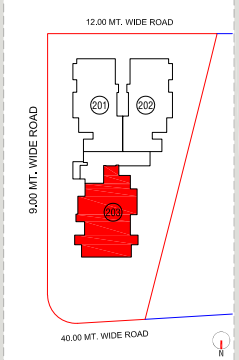


PROPOSED RESIDENTIAL PROJECT
AT AMBLI ROAD, AHMEDABAD

4BHK UNIT PLAN-202
(2ND TO 19TH FLOOR)

CONCEPTUAL PLANNING FOR STUDY ONLY.
NOT FOR CIRCULATION.





KEYPLAN

PROPOSED RESIDENTIAL PROJECT
AT AMBLI ROAD, AHMEDABAD

5BHK UNIT PLAN-203
(2ND TO 19TH FLOOR)

CONCEPTUAL PLANNING FOR STUDY ONLY.
NOT FOR CIRCULATION.

ADS
architect pvt. ltd.

