



*Where location meets expectations*

# HOME IS WHERE THE HEART IS

Home is the place where all things dear, are near!  
It's the watering hole you return to every single day,  
after tackling the adventures that life has to offer.  
A space such as this needs to be crafted not just designed.  
With this in mind we have created an aesthetic habitat  
that matches your aspirations and investment goals.



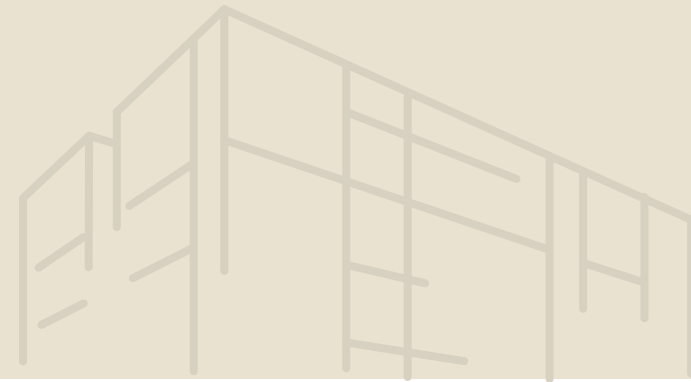






# THOUGHTS THAT SPARKED A NEW CREATION

At Triveni 1Five, right from choosing the location to designing and building the apartment, everything has been about you. We have taken care that we deliver our promise of trust and honesty. Our journey began with a detailed survey of the changing needs and of a modern and pragmatic would-be home owner which eventually became our yardstick by which we measured up to your expectations.

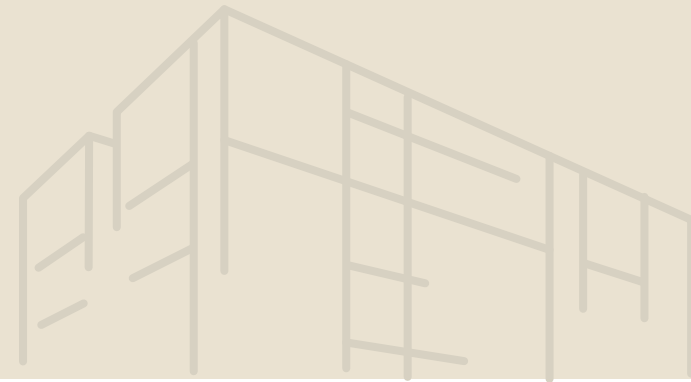




TRIVENI  
1 FIVE

## VIBRANT LIVING AND DINING ROOM

Integrating the living and the 5th bedroom makes the home bigger than its actual size. Such sensible design features add to the home's aesthetic elegance and functional effectiveness.





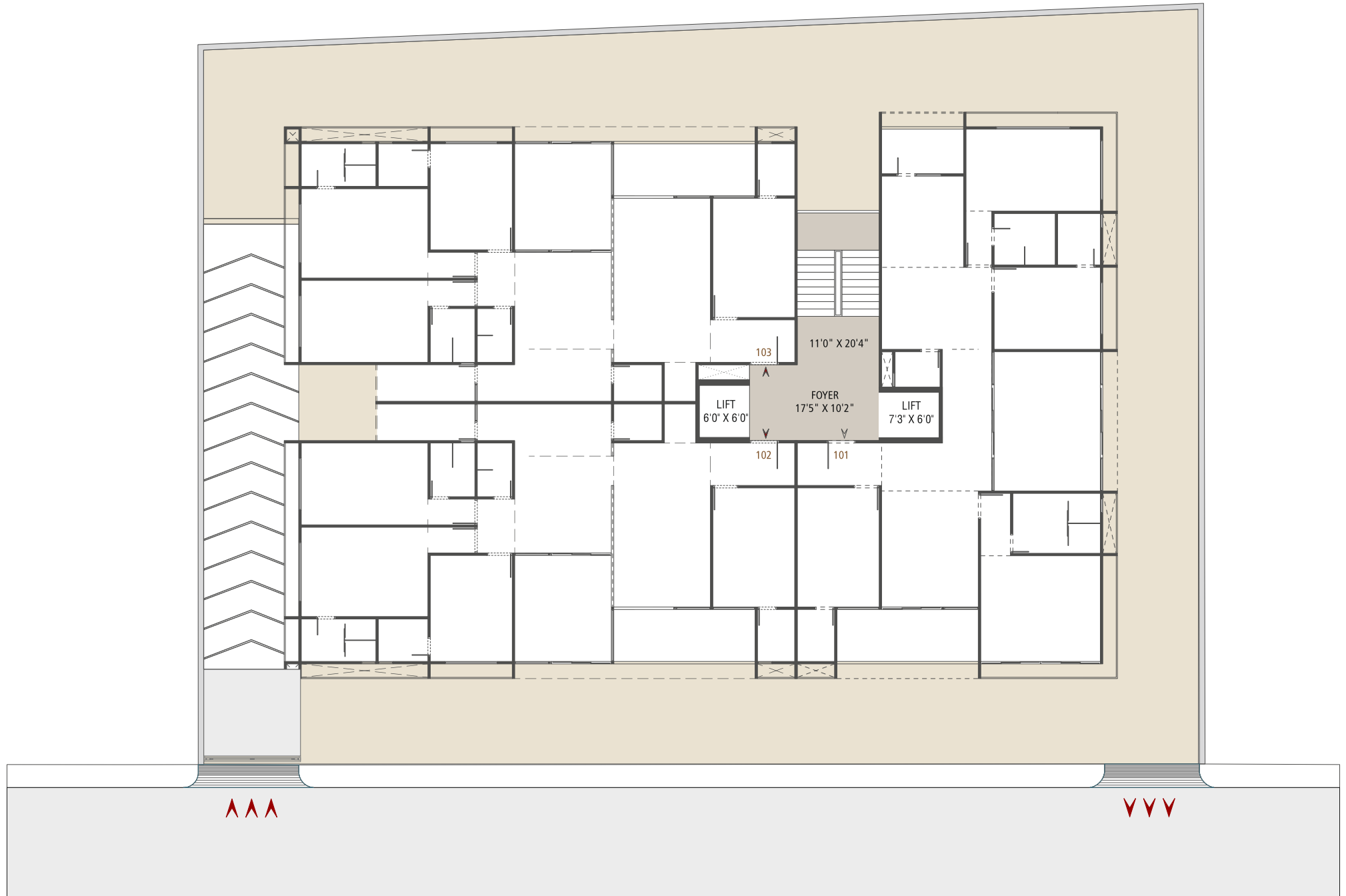


# GROUND FLOOR LAYOUT PLAN





# TYPICAL LAYOUT PLAN



TYPE A  
UNIT No. 101

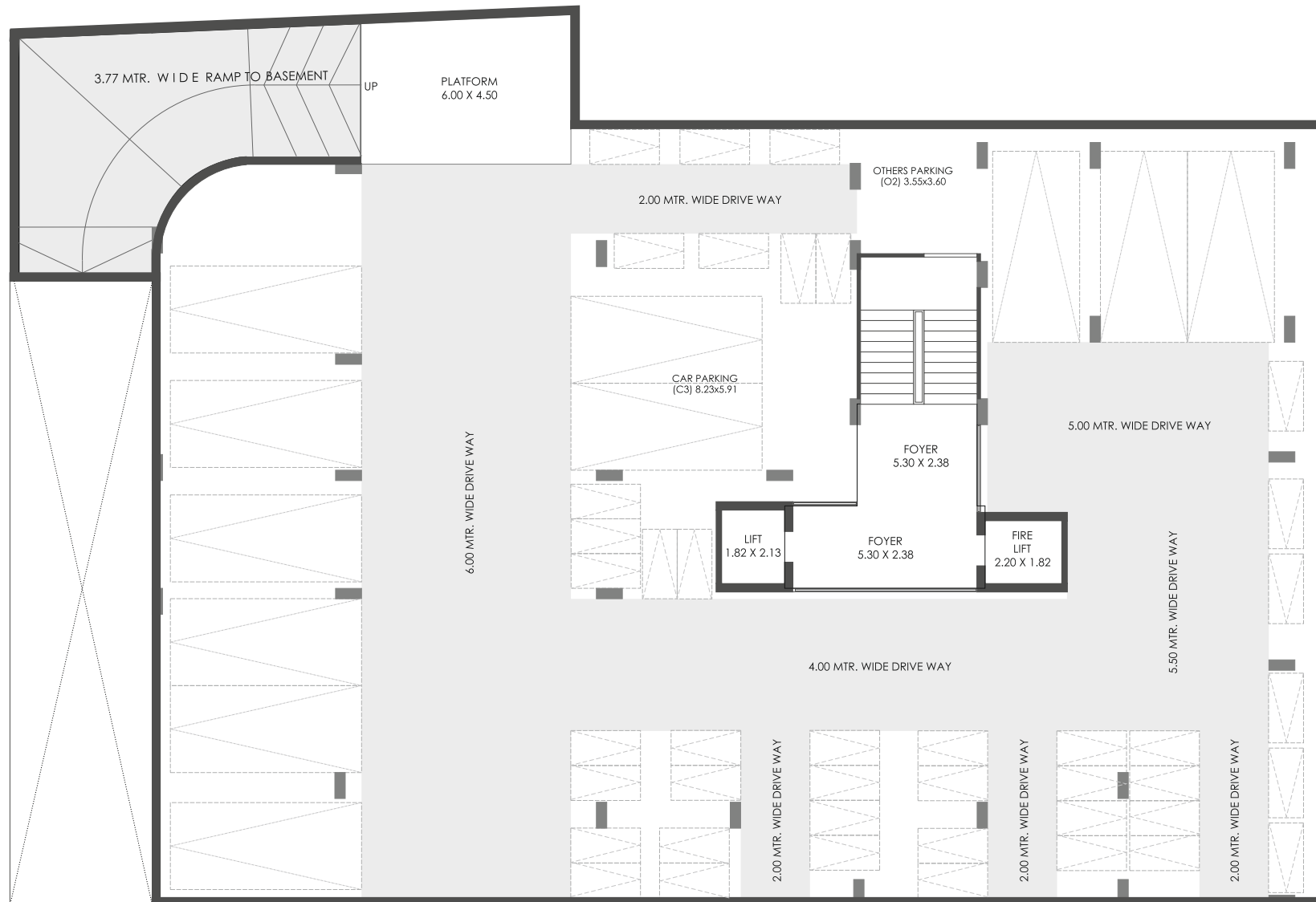


**TYPE B**  
**UNIT No. 102, 103**

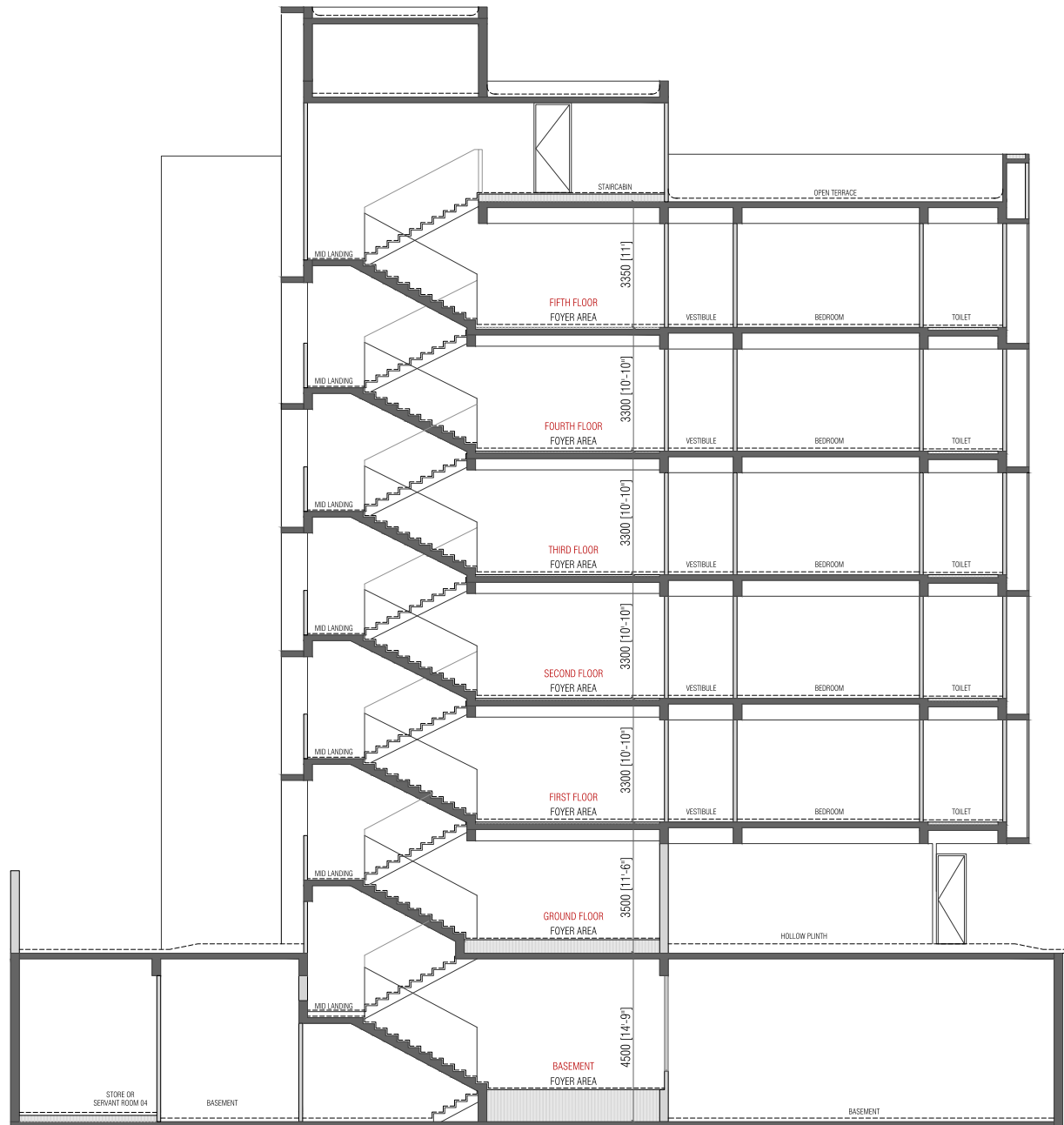




# BASEMENT LAYOUT PLAN



# SECTION



## SPECIFICATIONS:



### STRUCTURE

-Earthquake resistant R.C.C frame structure



### FLOORING

- Italian marble finish tiles flooring in drawing, living, dining and common passages of each apartment.  
- Wooden flooring in master bedroom.  
- Anti-skid tiles in balcony



### KITCHEN

-Granite Platform With Stainless Steel Sink Along With Electrical Point For Water Purifier.  
-Designer Glaze Tile Dedo Upto Lintel Level.



### BATHROOM

-Designer Ceramic Or Glazed Tile (2X1) Upto Lintel Level.  
-Sanitary ware High quality CP fittings (Jaquar/Kohler or Equivalent).



### DOOR & WINDOWS

-Flush doors with veneer finish.  
-Specially designed heavy aluminium/UPVC windows with Laminated / toughened glass for Safety | Noise Cancellation | Climate control.



### WALL FINISH

-Internal walls Single Mala Plaster with Putty Finish.  
-External walls Textured exterior paint as per façade design.



### ELECTRIFICATION

-Concealed fire resistant copper wiring (finolex or equivalent)  
-ISI Modular Switches & Wires  
-Distribution Board With MCB For Safety And Protection.



### TERRACE

-Open Terrace finished with suitable water proofing & China mosaic for heat reflection.



### LIFT

-Two automatic lift.  
-Intercom in lift cabin.  
-lift with M.S. / S.S. cabin.

- Water Supply 24x7 ground as well as Narmada water connection & Heat pump for continuous hot water supply.  
- Security & Connectivity CCTV surveillance and Wi-Fi enabled premises.



SITE: Triveni 1FIVE

Opp. Sanskaar apartments, Off S G Highway, Behind Shalby Hospital. Ahmedabad-380015

#### TERMS & CONDITIONS:

- All the architectural and interior images in the brochure are merely simulated interpretations using computer graphics to enhance the customer understanding and are not factual images.
- The colour and general appearance of the flooring and wall tiles, sanitary ware & fitting walls, ceilings, windows, doors, internal roads, trees, shrubbery etc. shown in the simulated computer graphics images are taken from the object libraries for the purpose of presentation and the prospective buyers of the concerned property are advised to refer to the constructor specifications.
- Additional amenities and or utilities not mentioned or shown in the brochure but may be required as per the law should be deemed to be forming part of the project by the purchaser.
- All Furniture including wardrobes, other sofa furnishings inter-alia curtains, mattresses, bed, linen, upholstery etc. lights and other electrical fixtures and appliances like air conditioners, refrigerators, TVs, telephones, laptops etc.. any of the equipment household accessories inter-alia crockery and cutlery, rugs, carpets, decorative pieces and wall hangings, wall papers, utensils etc. apparels and all other consumable and movable items shown in the simulated images do not form part of the sale of any property by the developer.
- All rights reserved with the developers to make any changes in the project as deemed necessary and all the members shall abide by such changes.
- GST, Stamp duty, registration charges, or any other charges and taxes as & when levied by government or any of its body shall be borne by purchaser/buyer/legal possession holder.
- This brochure is not to be treated as part of the legal document and is for an easy display of the project
- Subject to Ahmedabad Jurisdiction only.
- The Brochure is for restricted private circulation only and is not to be considered as a legal document with obligations for specific performance. It is meant for the purpose of conceptual presentation only.

*A Project By:*



**TRIVENI**

INFRA BUILD PVT. LTD.

SITE: **Triveni 1FIVE**

Opp. Sanskaar apartments, Off S G Highway  
Behind Shalby Hospital. Ahmedabad-380015



ARCHITECT:



STRUCTURE CONSULTANT

**UMANG PATEL**

**TRIVENI INFRA Office** : 1013/14 Aaron Spectra, Near Rajpath Club Parking, Rajpath Club Road, Off S G Highway, Ahmedabad-380054

**RERA Registration No.:** PR/GJ/AHMEDABAD/AHMEDABAD CITY/AUDA/RAA10781/141022 [www.gujrera.gujarat.gov.in](http://www.gujrera.gujarat.gov.in)